

# T6

## IoT Data Tracking Device

# IoT

T6 is an incredibly robust wireless tracking device suited for industrial environments and all-weather conditions.

It offers tracking and monitoring of data from assets such as attachments, transports, machines, vehicles, or entire fleets — locally and globally.

Position data is acquired by GPS or via mobile network triangulation if GPS is not available.

A built-in 3-axis accelerometer provides high-precision motion, shock, and orientation data, while other sensors track light and temperature.

The device uses low-power LTE-M technology to transmit data to a server at user-defined intervals or when specified events occur. When outside GSM coverage, the device logs and stores data internally until coverage is restored.

Data can be accessed through our online data portal, providing insights into asset location, performance, and status — presented on maps, in graphs, lists, and reports. API options are also available.

Devices are in operation all over the world in industries like construction, theft recovery, wind, and logistics.

## Editions



Standard Edition  
**T6.400**

- ✓ IP69K
- ✓ Radio beacon recovery
- ✓ External tag support (RHT / RFID)

**Standard Edition** supports external wireless sensors, such as **RHT tags**, for additional humidity and temperature tracking of larger assets.

It includes a built-in radio beacon for close-range location recovery when activated.



Bluetooth® Edition  
**T6.410**

- ✓ IP69K
- ✓ Bluetooth® Low Energy 5.0
- ✓ Data transfer via app

**Bluetooth® Edition** features **Bluetooth® connectivity**, allowing users to connect to any nearby devices using the Trusted Data App.

This enables tracking even when regular network coverage is unavailable.



RHTP Edition  
**T6.420**

- ✓ IP67
- ✓ Relative humidity
- ✓ Temperature, air pressure

**RHTP Edition** features high-precision tracking of **relative humidity, temperature, and air pressure**.

This all-in-one device is ideal for monitoring installations and sensitive assets, helping ensure compliance and safe working conditions.

## Sensors and Trackable Data

Included in all editions



### Utilization Data

Analyze running hours to avoid unplanned downtime



### Software / API

All data insights are accessible via our online platform or API



### Motion

Detect movements and vibrations to monitor asset activity



### Shock

Track shock impacts on assets exceeding G-force thresholds



### Temperature

Monitor temperature to prevent damage or corrosion



### Position

Track, locate, and monitor the whereabouts of all assets



### Tilt

Monitor asset tilt beyond a predefined angle



### Light

Detect unauthorized light exposure on assets

## Specifications

### T6.400 Standard Edition

UHF Radio Antenna (internal)	Radio beacon recovery
External Tag Support	RHT, RFID
IP Rating	IP69K

### T6.410 Bluetooth® Edition

Additional Data Transfer	Bluetooth® Low Energy
Bluetooth® Technology	Bluetooth® 5.0 SIG Declaration ID: D064014
IP Rating	IP69K

### T6.420 RHTP Edition

Additional Trackable Data	Relative humidity, temperature, air pressure
Sensor Operating Range	0–100 % RH -30 °C to +85 °C 300–1100 hPa
Humidity Sensor Accuracy	±3 % RH
Humidity Sensor Hysteresis	±1 % RH
Temperature Accuracy	±0.5 °C at 25 °C ±1.5 °C full scale
Air Pressure Accuracy	±1.7 hPa at -20 °C to 0 °C ±1.0 hPa at 0 °C to 65 °C
IP Rating	IP67

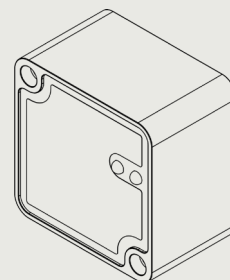
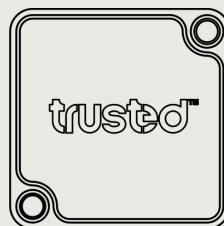
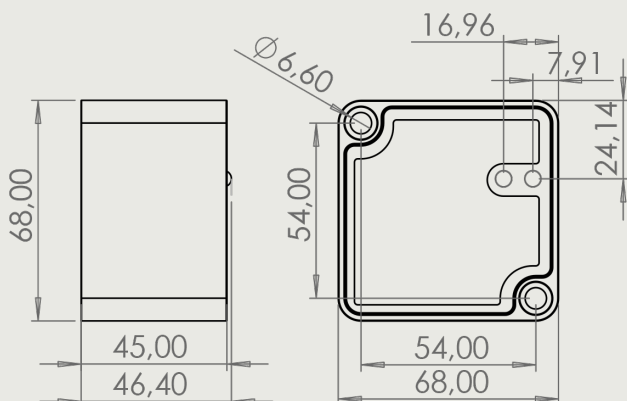
\* Depending on signal and temperature conditions

\*\* Last 2-4 digits vary outside the EU. Find HS code for your region on the EU webpage Access2Markets: <https://trade.ec.europa.eu/access-to-markets/>

## All Editions

Trackable Data	Position, motion, shock, vibration, tilt, rotation, light, temperature (±0.5 °C)
Data Storage	Store-and-forward data log; default 300 data entries before transmission
Data Transmissions	LTE / 2G data to server
Battery Lifetime	Typically 7000 transmissions (1 transmission per day*)
Antennas (internal)	LTE, GPS
Network Technology	LTE-M / GSM EGPRS (850 / 900 / 1800 / 1900 MHz)
Positioning Technology	GPS, mobile cellular triangulation
SIM	Embedded (subscription required)
Configuration	Online platform or app (sent via server)
Server Protocols	API (available upon request)
Motion Sensor	3-axis accelerometer (max. continuous acceleration: 8 g)
Housing	PA6 (nylon), molded with epoxy
Batteries	47 Wh primary lithium (encapsulated)
Lithium Content	3.8 g
Dimensions	68 x 68 x 45 mm
Weight	280 g
External Magnet Force	20 kg (ordered separately)
Operating Temperature	-30 °C to +85 °C
Storage Temperature	Max. +30 °C (recommended)
ADR	UN3091
US Content	0 %
ECCN	EAR99
HS (TARIC) Code	8526 91 XX XX**
Country of Origin	Made in Denmark

## Dimensions



Version 1.0 - Jan 2026 | Subject to change without notice.  
Install with screws as pictured or magnets (sold separately).