

Tips and guidelines to

INSTALL TRUSTED PROTECTIVE COVER



Before you begin

1



Record device ID

Find the device in the Trusted Data Portal

2



Unpack your kit

Check all parts are present

3



Prepare attachment

Make sure mounting holes are prepared

4



Mount device.

Follow the instructions below when possible.

Get started

4 tips for installation

We recommend that you **read the full manual** to learn how to give your Trusted hardware the best conditions for a long energy-effective life. But to get started, keep these 4 tips in mind.

- ✓ If mounting holes need to be drilled make sure not to damage your attachment.
- ✓ Install where the device is unlikely to suffer direct impacts (rocks, concrete debris etc.).
- ✓ Always use personal protection when working with tools
- ✗ Never install the device where it is completely surrounded or covered in metal or similar materials.

Guidelines for installation

A Trusted device has many various use cases and can be installed in countless places on very different assets.

But there are **two general guidelines that serve as best practices for installation**. You should aim to fulfill these two whenever possible.

Give your Trusted hardware the best conditions for a long energy-effective life by keeping the following in mind:



Secure optimal conditions for mobile connectivity and GPS signals

Place the hardware where it is less likely to be struck by rocks or other debris

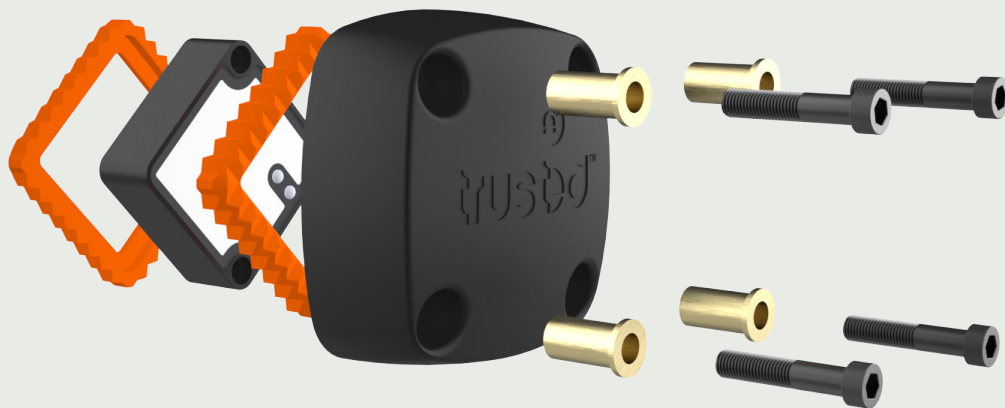
Kit content

Check the Trusted Protective Cover kit



- 1** Protective Cover
- 2** Shock absorbers (2 pcs)
- 3** M8x50 mm cylinder head hex screws (4 pcs)
- 4** Bushings (4 pcs)

Assembly schematic

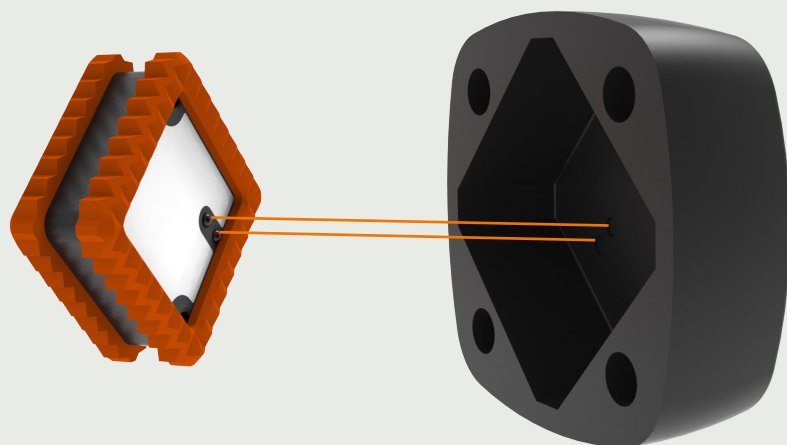


1. Absorbers

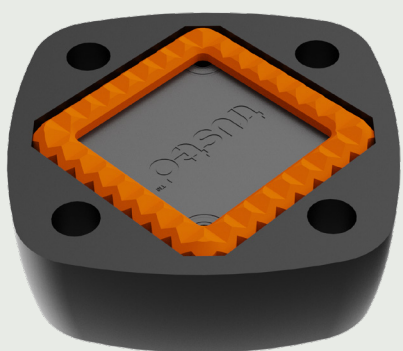


Put shock absorbers (2) on front and back on tracking device

2. Align & insert

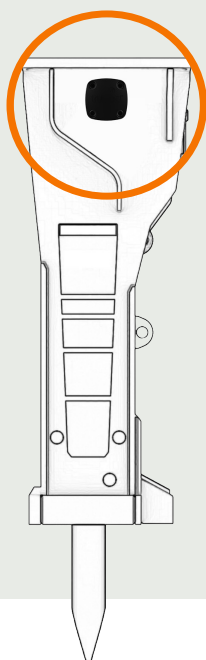


Observe alignment with device LED's and corresponding cut-outs in the protective cover (1).



Insert device with absorbers (2) into the protective cover (1).

Mounting location

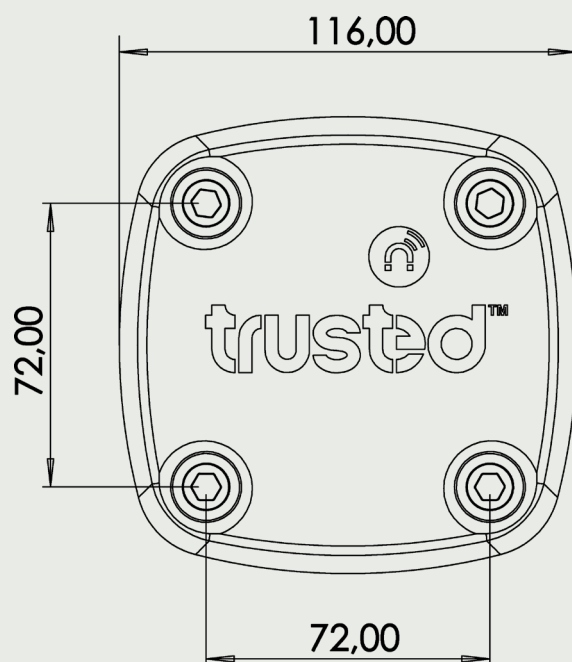


Locate safe mounting spot on your tool that both ensures good signal conditions and lessens the risk of impact from debris.

Note: If holes (M8) need to be drilled then take care not to damage internal parts of the tool.



Size & drill guide



Mounting

Insert bushings (4) in mounting holes.



Insert cylinder head hex screws (3). Use 6 mm hex wrench and cross-tighten the 4 bolts.

Use up to 30 Nm torque.



Finished !



Activation

If your device is not already activated you can still do this using a strong magnet:
Place a magnet onto the magnet symbol for 5-10 seconds. 15-20 minutes later the device is ready.
Please refer to the device manual for further information.



Your device is now installed and ready to be taken into operation.

For configuration and use, please follow instructions for device and the Trusted Data Portal or the Trusted Data App

Support options

Support or personal service

For support or personal service, please contact your Trusted dealer or Trusted A/S directly.

For more information or general support on the Trusted data tracking solution, get help online by accessing our Help site directly from the Trusted Data Portal.