

T7

Bluetooth®

IoT data tracking device



LTE/2G



Bluetooth®



GPS



IP69k casing



Long-life battery



Accelerometer



Motion



Shock



Tilt



Utilization



Temperature



Light

T7 Bluetooth® is an IoT tracking device and data logger designed for **data monitoring and tracking** of assets like hydraulic attachments and sensitive freight.

Its **extremely robust casing** makes it suitable for all industrial environments and weather conditions. Battery lifetime varies on individual settings but is typically 5 years based on 1 transmission/day.

When mounted, devices track high-precision data such as motion, shock, vibration, and handling of your assets using a built-in **3-axis accelerometer**.

Other sensors track the environment around your assets such as light and temperature. Position data is available through **built-in GPS** or via mobile network triangulation if GPS is not accessible.

T7 Bluetooth®-edition featuring Bluetooth Low Energy is a small IoT device for data monitoring and tracking of assets and equipment locally and globally.

Highlights include robust casing, long-life batteries, global GSM connectivity and advanced and intelligent sensor technology.

T7 Bluetooth can connect to nearby data apps. It features LTE Cat-M1 technology with 2G fallback.



This Bluetooth edition features **connectivity** that works perfectly in tandem with Trusted Data App. It features the communication technology LTE Cat-M1 for transmissions over global mobile networks.

All data is logged internally on the device between transmissions or when outside of data coverage. Data transmissions follow a user-fixed schedule or are triggered based on sensor data configured by the user.

Device is **managed online** on the Trusted Data Portal. The portal visualizes data on maps, in graphs, and in reports. Features include utilization, service intervals, compliance data, alarms and more. API is available.

Devices are in operation all over the world in industries like construction, security, wind, and logistics.

Easily installed with magnet kit or with screws as pictured. Installation kits are sold separately.

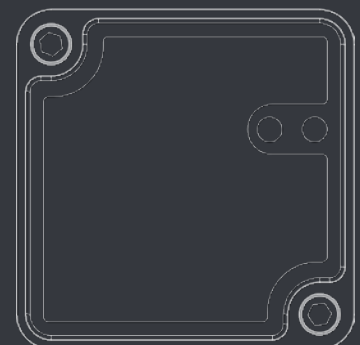
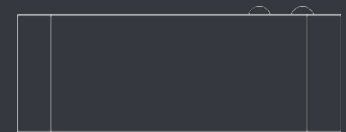
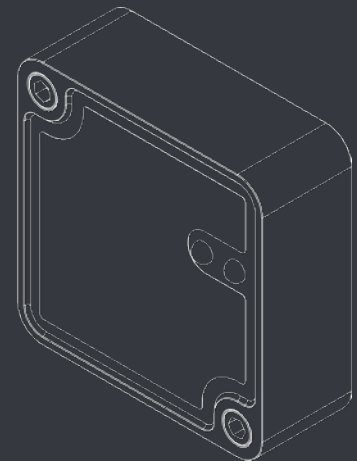
Specifications

Type: T7.410

Battery lifetime	Typically 4000 transmissions based on 1 transmission/day *
Sensors	Position, motion, tilt, light, utilization, 3-axis shock (up to 8 g)
Data log	Store-and-forward log, default 300 entries of all data incl. position and sensor data
Antenna, GPS	Internal
Antenna, LTE/2G	Internal
Antenna, Bluetooth	Internal
Bluetooth technology	BLE (v. 5.0) **
Network technology	LTE Cat M1 / GSM EGPRS (850/900/1800/1900MHz)
SIM	Embedded, subscription required
Server communication	LTE/2G
Server protocols	API available upon request
Configuration	Via server
Housing	PA6 (nylon) potted with epoxy
IP rating	IP69k
Maximum allowed continuous acceleration	8 g
Dimensions	68 x 68 x 25 mm
Weight	170 gram
Battery package	28 Wh (3 x primary lithium, encapsulated)
Lithium content	< 2 gram
Temperature, operating	-30 °C to +85 °C
Temperature, storage	+30 °C max (recommended)
ADR	UN3091
US content	0%
ECCN	EAR99
HS (TARIC export) code	8526912020
Country of origin	Made in Denmark

*) Depending on signal and temperature conditions.

**) Bluetooth SIG Declaration ID: D064014



Version 1.6 - Subject to change without notice.
This data sheet references to firmware 3.59 or newer.