

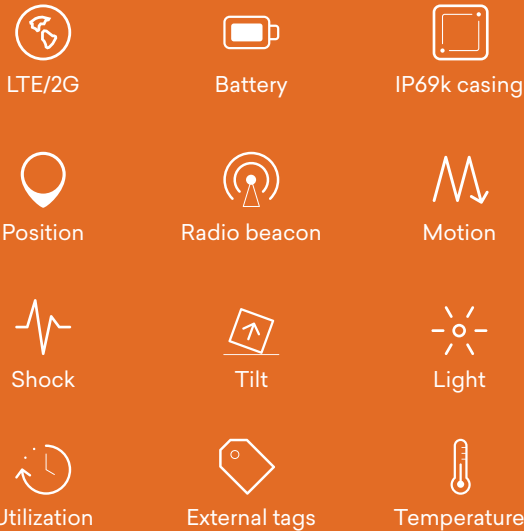
T7 LTE

IoT tracking device

T7^{LTE} is a small IoT device for long-term tracking and data monitoring of assets and equipment globally.

Featuring robust casing with long battery life, it comes with advanced and intelligent sensor technology.

It connects using the low power network technology LTE Cat-M1 and supports 2G fallback.



T7^{LTE} is a small IoT tracking device and data logger that offers **asset monitoring and data tracking** of any asset; from non-powered equipment to entire fleets.

Its **robust casing** is suited for all industrial environments and all-weather conditions with an operating temperature range from -30°C to $+85^{\circ}\text{C}$. Battery life-time is typical 5 years based on 1 transmission/day.

The device uses the low power communication technology **LTE Cat-M1** to send transmissions to a server. Transmissions can be set at user-fixed intervals and if specified events occur.

Devices out of data coverage will **log data input** until coverage is available again.

A built-in **3-axis accelerometer** offers high-precision data on motion, shock and orientation, while other

sensors track light and temperature. Available **external wireless RHT and RFID-tags** offer humidity sensor and additional temperature data.

Position data is acquired by **GPS** or via mobile network triangulation if GPS is not available. A built-in radio beacon can be activated for close-range location.

Data can be viewed on a cloud-based data portal that provides **complete visibility and data analytics**. It provides insights on location, performance, and status of assets and equipment. Data is available on maps, in graphs and in reports. API options are available.

Flight mode feature is available to suppress all radio transmissions to ensure safe conditions during flight.

Devices are in operation all over the world in industries like construction, theft recovery, wind, and logistics.

Specifications

Type: T7.400

Battery lifetime	Typically 4000 transmissions based on 1 transmission/day *
Sensors	Position, motion, tilt, light, utilization, 3-axis shock (up to 8 g)
Data log	Store-and-forward log, default 200 entries of all data incl. position and sensor data
Antenna, GPS	Internal
Antenna, LTE/2G	Internal
Antenna, radio	Internal
Radio beacon	UHF
Network technology	LTE Cat M1 / GSM EGPRS (850/900/1800/1900MHz)
SIM	Embedded, subscription required
Server communication	LTE/2G with SMS backup
Server protocols	API available upon request
Configuration	Via server
External tag connectivity	Yes
Housing	PA6 (nylon) potted with epoxy
IP rating	IP69k
Maximum allowed continuous acceleration	8 g
Dimensions	68 x 68 x 25 mm
Weight	170 gram
Battery package	28 Wh (3 x primary lithium, encapsulated)
Lithium content	< 2 gram
Temperature, operating	-30 °C to +85 °C
Temperature, storage	+30 °C max (recommended)
ADR	UN3091
US content	0%
ECCN	EAR99
HS (TARIC export) code	8526912020
Country of origin	Made in Denmark

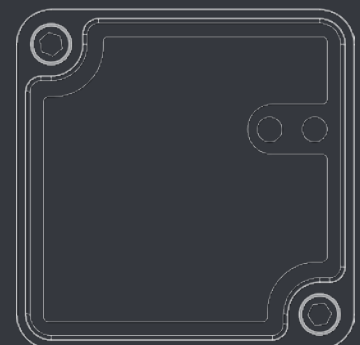
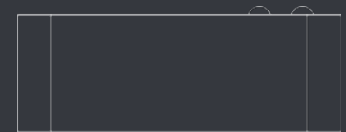
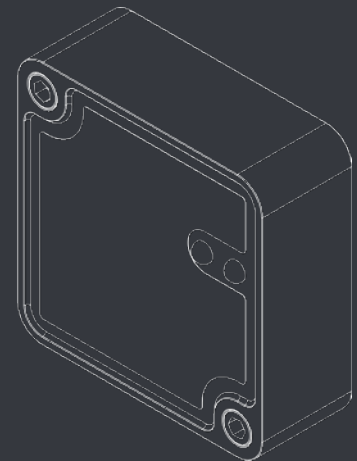
Typical number of transmissions

Network	LTE	LTE/2G **	2G
1 transmission/day	4000	3000	2500
4 transmissions/day	6000	4500	3500
24 transmissions/day	7000	5500	4000

Without GPS, add 10% to above

*) Depending on signal and temperature conditions

**) 50% LTE and 50% 2G



Version 6.1 - Subject to change without notice.
This data sheet references to firmware 3.54 or newer.